

ABE-X aluminium

LED- incident light illumination - surface light

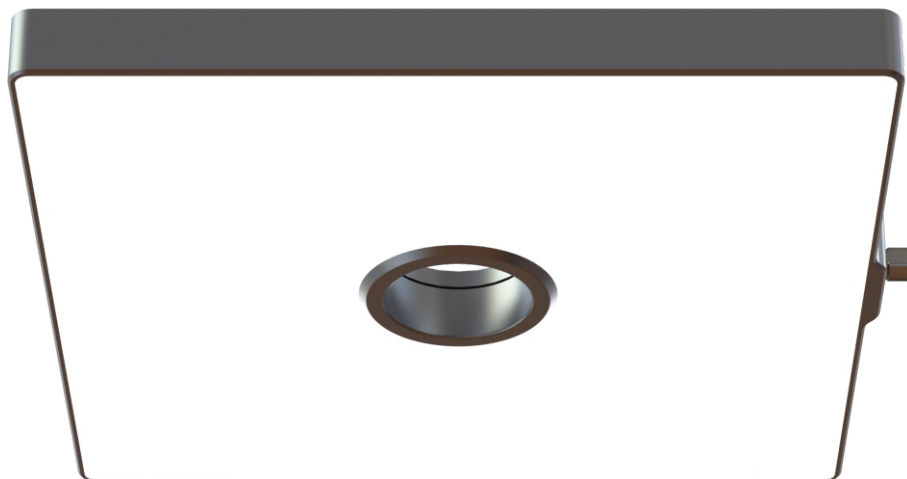


Flat dome lighting

Standard connection M12
DIN EN 61076-2-101
Triggermodus
inside

Compact LED incident light illumination with integrated lens opening.

The **diffuse and very bright lightfield** provides best results in the camera-supported industrial image processing. Minimal energy consumption with optimum illumination.



powerful, durable, compact - Made in Germany

brief description

Powerful LED surface light with integrated lens opening for perfect illuminated product surfaces.
Camera positioning in the middle of the illumination.
Very compact, cleaning-optimised design.
The external controller (lighting controller BR) provides optimum control and constant brightness of the high-power LED's.
Various lightcolours, sizes and designs are available.



features

- optimised, large-format, homogeneous lightfield with intergrated lens opening.
- constant brightness by intergrated or external (S1) controller
- strobe mode for higher intensity
- lightcolours: red (RT) / white (WS) / infrared (IR)
- anodized aluminium housing natural / hardcoated
- lightfield plate acrylic glass (PMMA) diffuse (AD) /glass diffuse (GD)
- mounting thread 4 x M5 on the rear side

electrical connections

version S1 without controller

sensor plug M12 / 4-pole

PIN	colour	description
1	brown	supply voltage constant current source BR01-2A/BR02-8A
2	white	N.C.
3	blue	0V GND
4	black	N.C.



version S1 without controller can only be used with constand current source BR01-2A/BR02-8A.

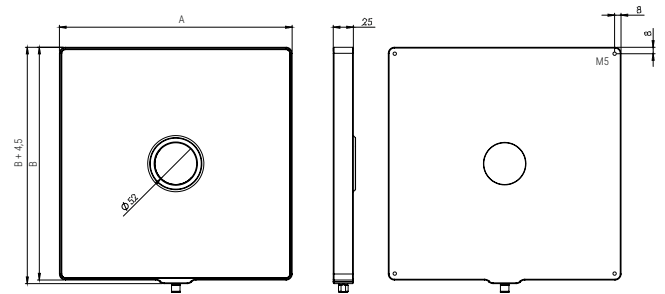
technical data standard version

supply voltage:	24VDC (+-10%)
current continuous operation:	see table
trigger time max. (Ti):	10ms
trigger-/breaktime (Ti/Tp):	1/10
lifetime (MTBF):	min. 20.000h
ambient temperature:	0°C ... 40°C
protection class:	IP65

UL-compliant



dimensions



model	lightfield width A mm	lightfield height B mm	current max. continuous mA	current max. strobe mode mA	lightfield- plate	light- colour	housing- material
ABE-X52-275-275	275	275	depending on model and light source	depending on model and light source	glass diffuse GD	white WS	aluminium anodized natural AL0
minimum size	275	275			acrylic glass PMMA diffuse AD	rot RT infrared IR	
maximum size	815	815					
lightfield grid	275 - 455 - 635 - 815						

model configurator

ABE - X52 - [] - [] - [] - [] - [] - AL0 - S1

lightfield width A (in mm): 275 / 455 / 635 / 815

lightfield height B (in mm): 275 / 455 / 635 / 815

lightfield plate: **GD** (glass diffuse) **AD** (acryl diffuse)

lightcolour: **WS** (white) **RT** (red) **IR** (infrared) **UV** (ultraviolet)

lighting engineering: **12** (120°) **06** (60°Lens)

housing material: **AL0** aluminium anodized natural **AI5** aluminium hardcoated

special version: **S1**(without integrated controller)

standard version: **TEXT rot**

model example: ABE-X52-455-635-AD-WS-12-AL0

subject to change without notice. Further model versions and special solutions on request.

info@etw-technik.de • www.etw-technik.de

DasTechnikTeam.