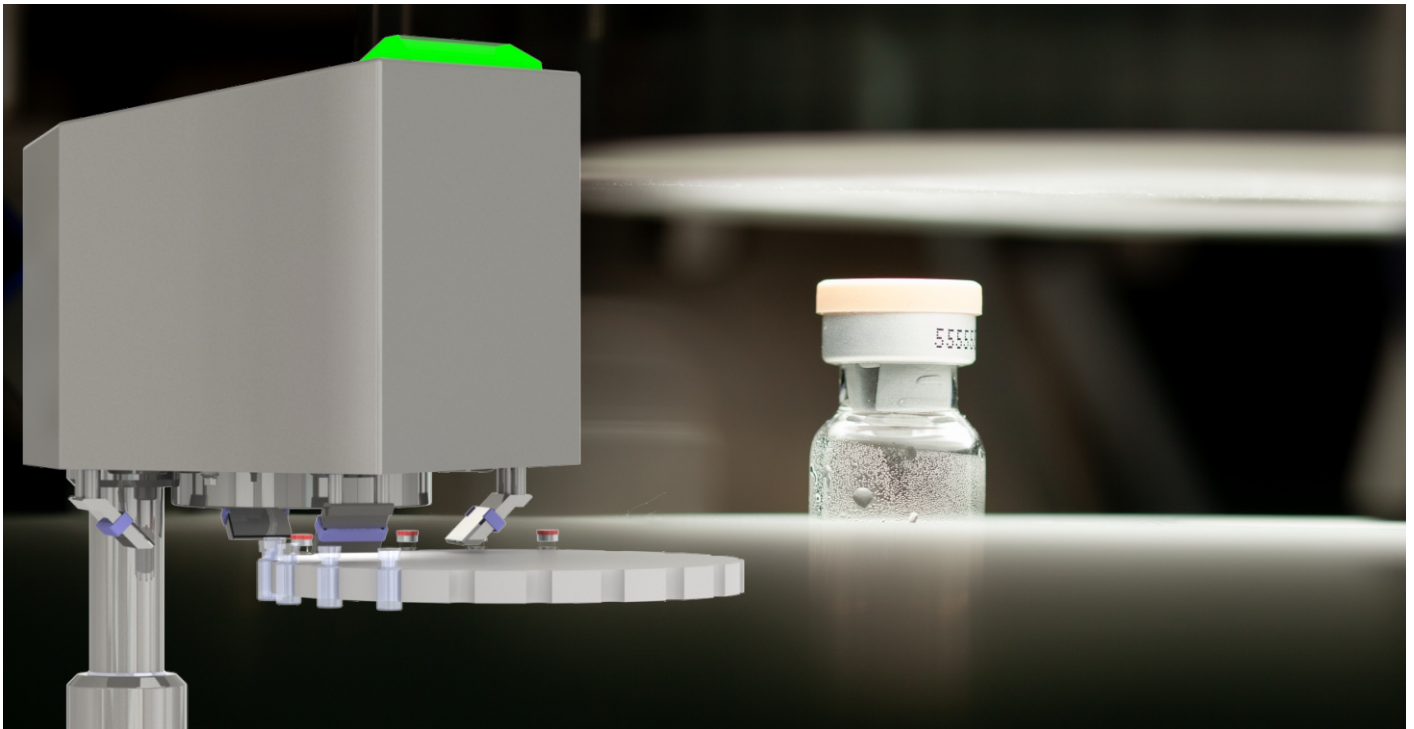


## BKS-400 Crimp Cap Inspection 4 x 90°

pharma



stainless steel crimp cap inspection suitable for pharmaceutical applications  
 - for the integration of customer-specific camera systems -  
 for highest hygienic, GMP-compliant requirements for the inspection of the crimp quality surface.



hygienic design, compact, flexible - Made in Germany

### brief description

Crimp cap inspection system **BKS-400** for visual evaluation of the flanging cap quality according to GMP Annex1 (121). The customer-specific cameras are integrated in an isolator-compatible **stainless steel** (AISI 316L) / PVDF housing, which was developed according to hygienic and **laminar flow** (LF) aspects. Due to the compact arrangement, the system can be ideally integrated into the filling line, even in existing lines. The BKS system can be implemented both in linear lines as well as in rotary machine setups. The flanged cap inspection is equipped with a **4 cameras** system arranged in a 90° degree angle, an adjustable mirror systems as well as a specially developed, diffuse, **reflection-free LED incident light illumination** with integrated controller. The system is suitable for the inspection of vials with cap diameter **13-32 mm**.



## features

- housing made of stainless steel 1.4404 (AISI 316L) / PVDF
- hygienic, isolator-compatible, LF-optimized design
- protection against external influences such as dust, dirt, moisture and also resistant to alcohol, H<sub>2</sub>O<sub>2</sub>, acids and alkalis
- protective panes real glass anti-reflective (exchangeable)
- developed and manufactured according to GMP guidelines
- high chemical resistance for all seals
- cable bushing in machine base
- height adjustment required on site (see wiring diagram) or available as ETW accessory
- customer-specific adaptation possible (3 x M8 / TK-Ø66)
- LED status display 24VDC RGB red-green-blue (yellow)
- LED incident light illumination 24VDC white ABE-BKS-170
- gas density / H<sub>2</sub>O<sub>2</sub> version
- HMI housing stainless steel (option)

## test characteristics

- cap presence
- cap height (indirect presence check stopper)
- flip control: presence / colour
- colour inspection of the aluminium apron
- crimp quality: not crimped - partially crimped
- cap quality: cosmetic defects on aluminium apron (dents - scratches or similar)

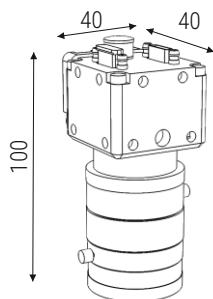
cycle times: <100 ms (depending on the camera system)

## technical data

ambient temperature: 0°C ... 40°C  
 protection class: IP69

## camera specification

camera dimensions  
 max. 40 x 40 x h 100 mm



*camera systems are not included in the standard scope of delivery of the BKS-400.  
 Adaption according to customer specification and camera model.*

*Complete systems including camera on request.*

## system variants

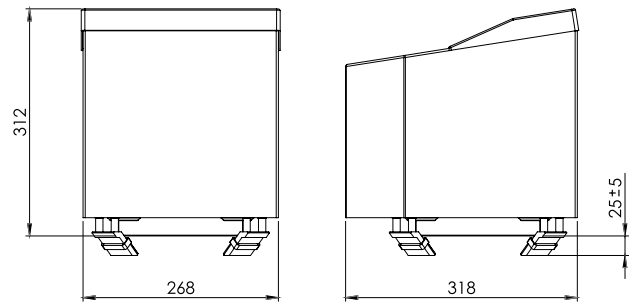
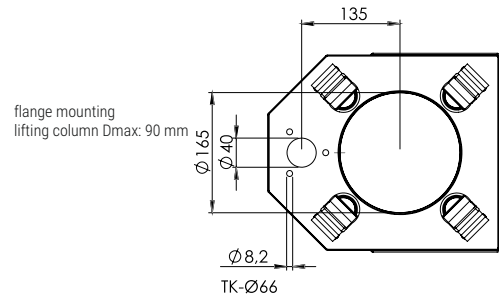
model	status-advertisement	quantity camera	w mm	d mm	h mm	weight kg
BKS-400-SA1	yes	4	268	318	340	11,0

Subject to change without notice. Further model variants and special solutions on request.

## fields of application

- pharmaceutical industry
- medical technology
- diagnostic
- high quality cosmetics

## dimensions



smallest star wheel - diameter  
 240 mm

## system structure



HMI housing stainless steel according to customer specification